

KIOSK - MOBILET

KONSTRUKCIJA:

pohištveni profili 80x80 in 80x40, varjeni in prašno barvani - črna barava

FASADA:

Zatična deska 2500x116x19	19 mm
Vezana plošča bukev	9 mm
Vetna zapora	
Izolacija - kamena volna	80 mm
Parna zapora	
Vezana plošča bukev - oljena	6 mm

SKLOPNA POLKNA:

Zatična deska 2500x116x19	19 mm
stiropor / stirodur	20 mm
Vezana plošča bukev	9 mm
pritrdjena na klavirsko okovje, spodaj in zgoraj pripira	

FIKSNA ZASTEKLITEV:

termopan 4-8-4, dimenzij 40 x 250 cm

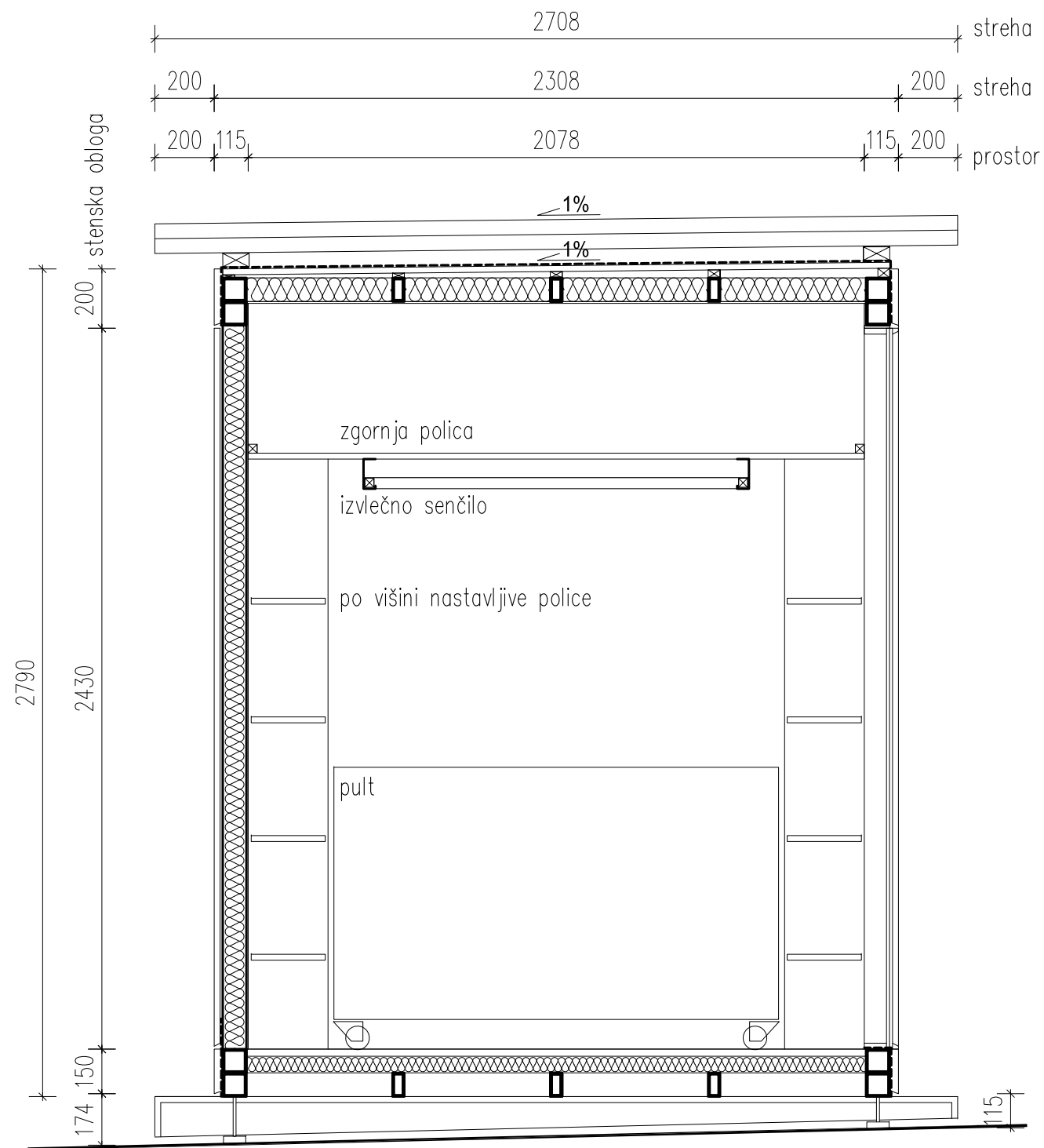
VOZIČEK - PULT:

kovinska konstrukcija iz pohištvene cevi 30x30
varjeno, prašno barvano na bež barvo, RAL
skupna domenzija: 600x1300x830

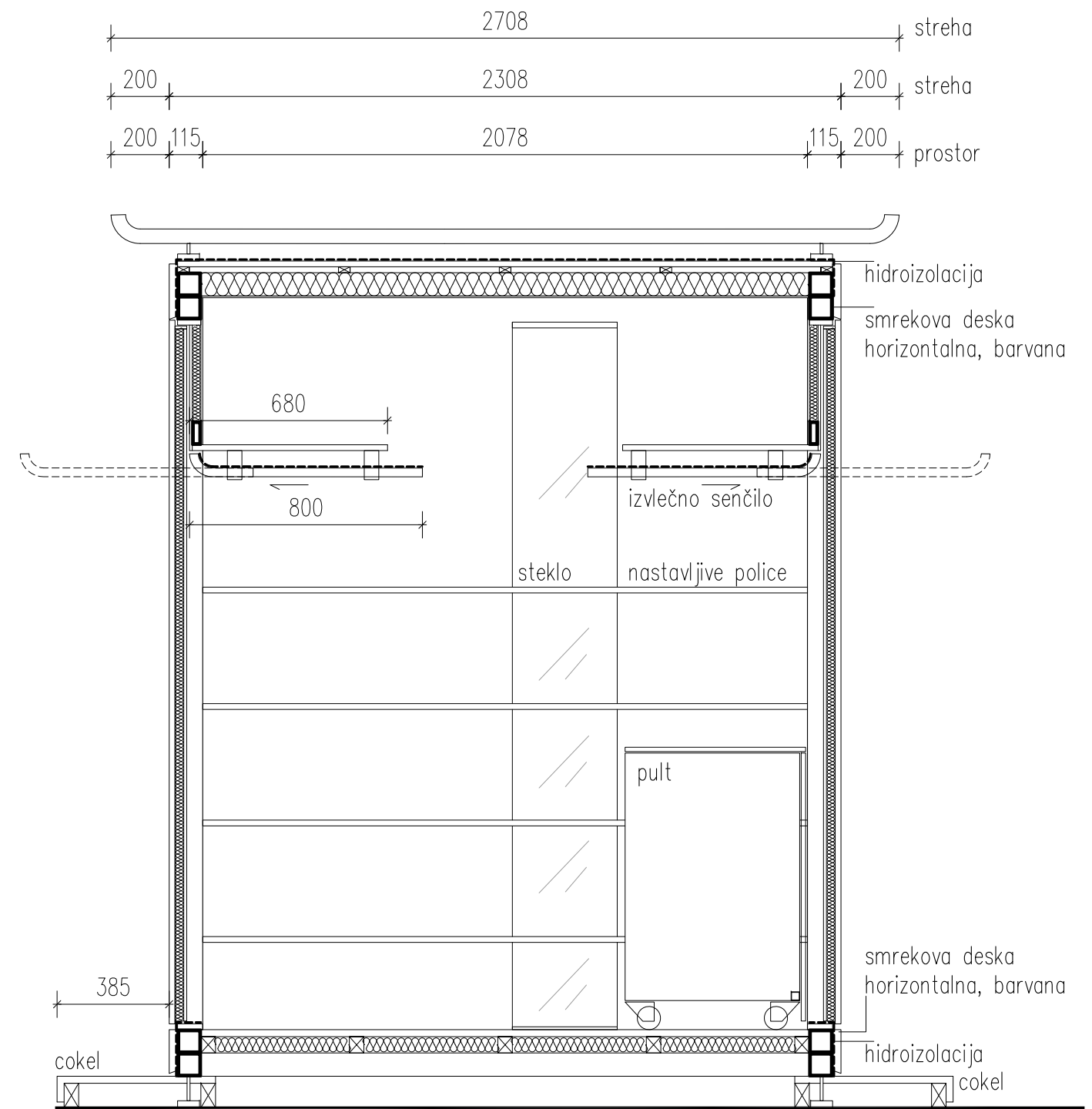
lesene police 3 x vezana plošča breza, oljena 600 x 1300 x 20 mm
fronta vezana plošča breza, oljena 920x1300x20 mm

NOTRANJE POLICE:

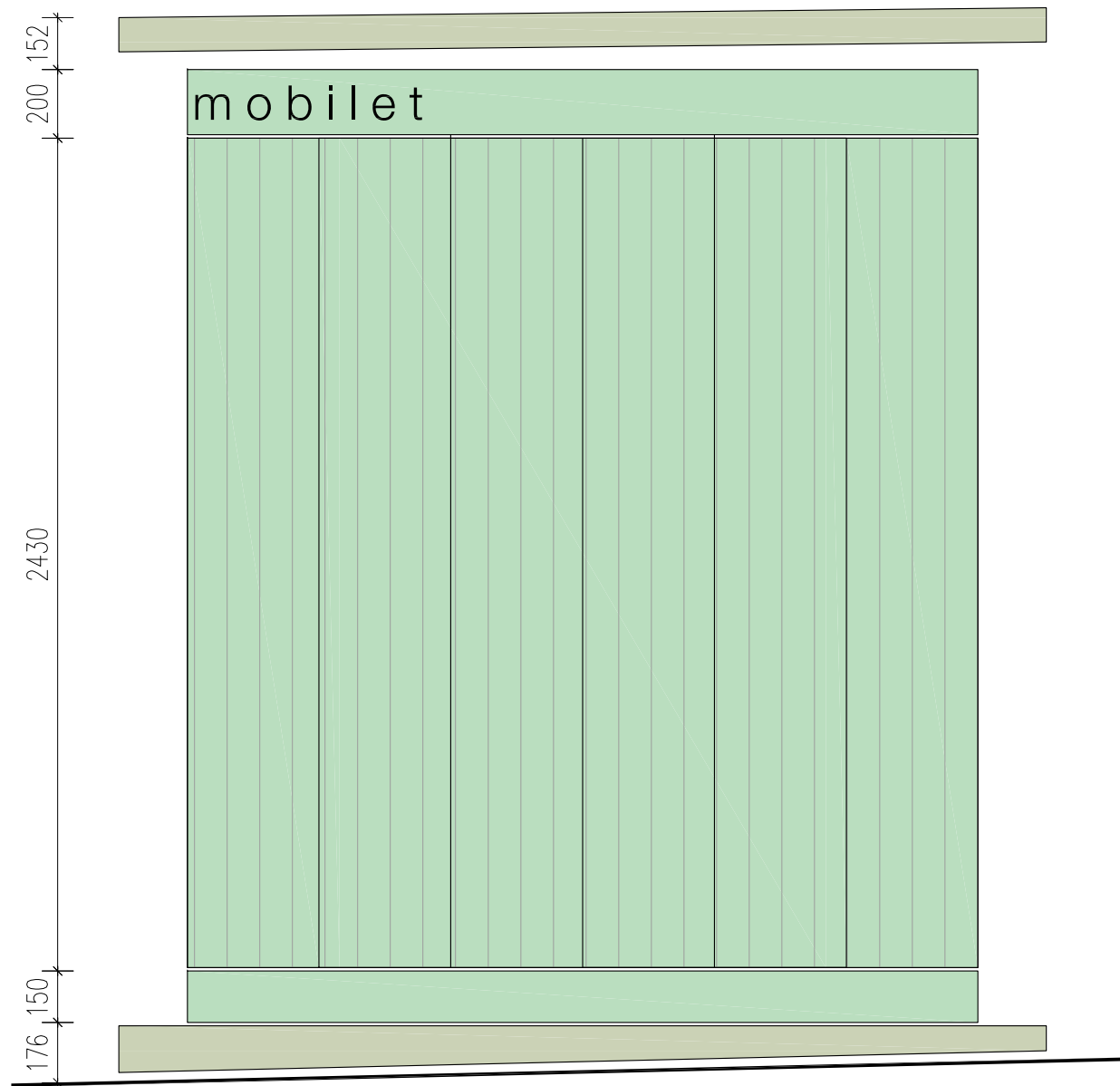
okovje: nastavljivo npr. sistem Boaxel Ikea, bež barve
police 6 kom, oljena vezana plošča 2000x250x20



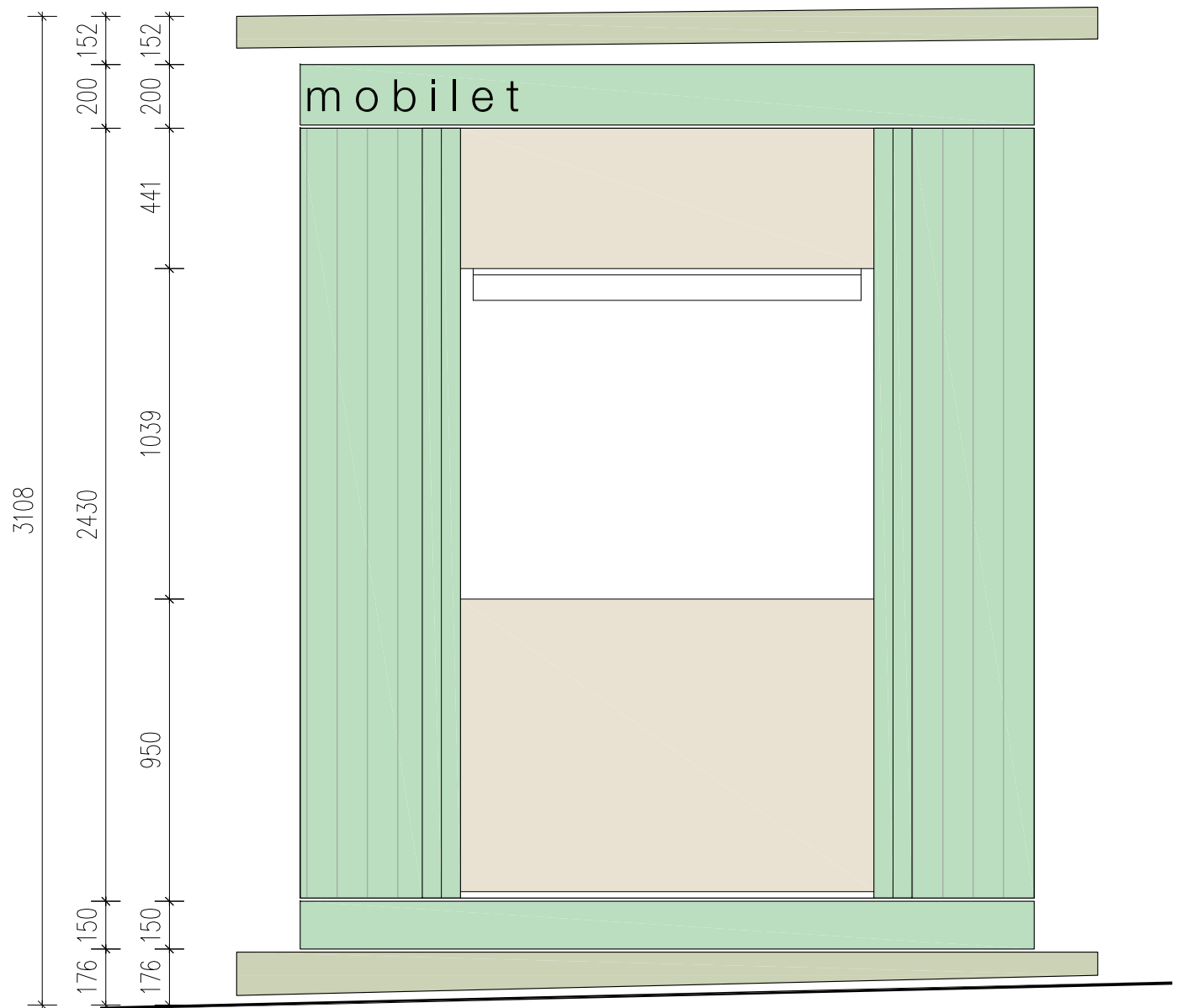
PREREZ BB



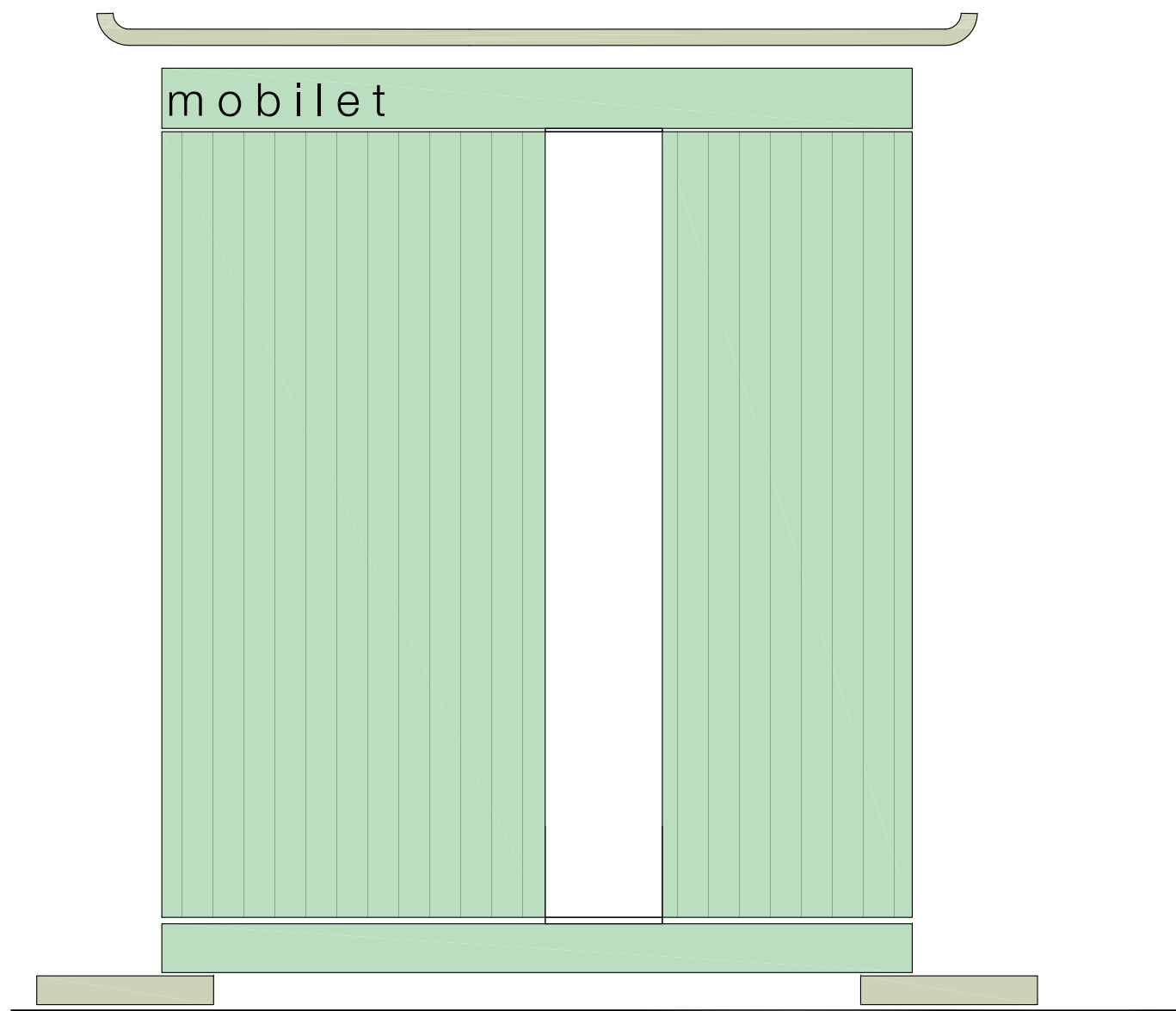
PREREZ AA



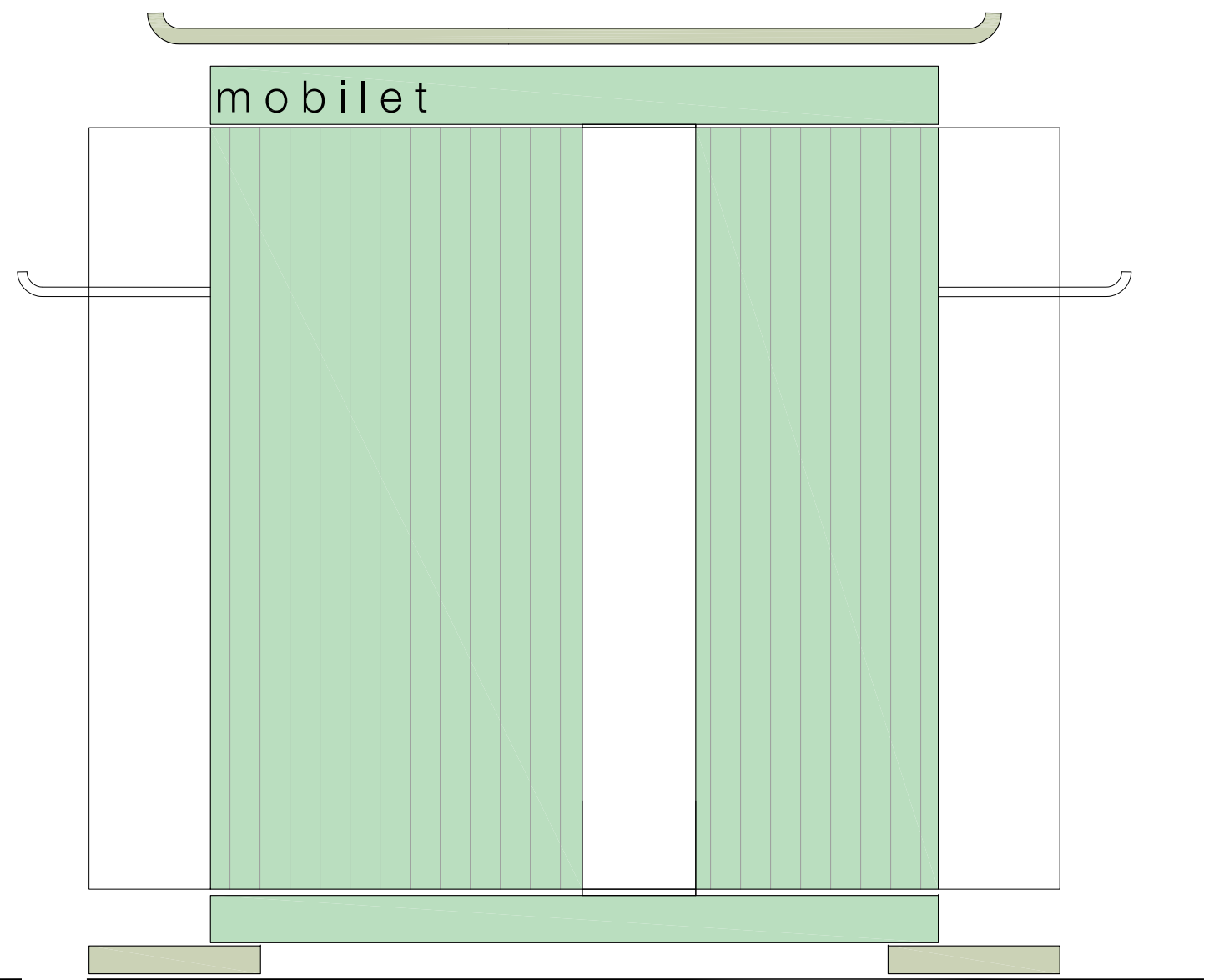
FASADA A - zaprt kiosk



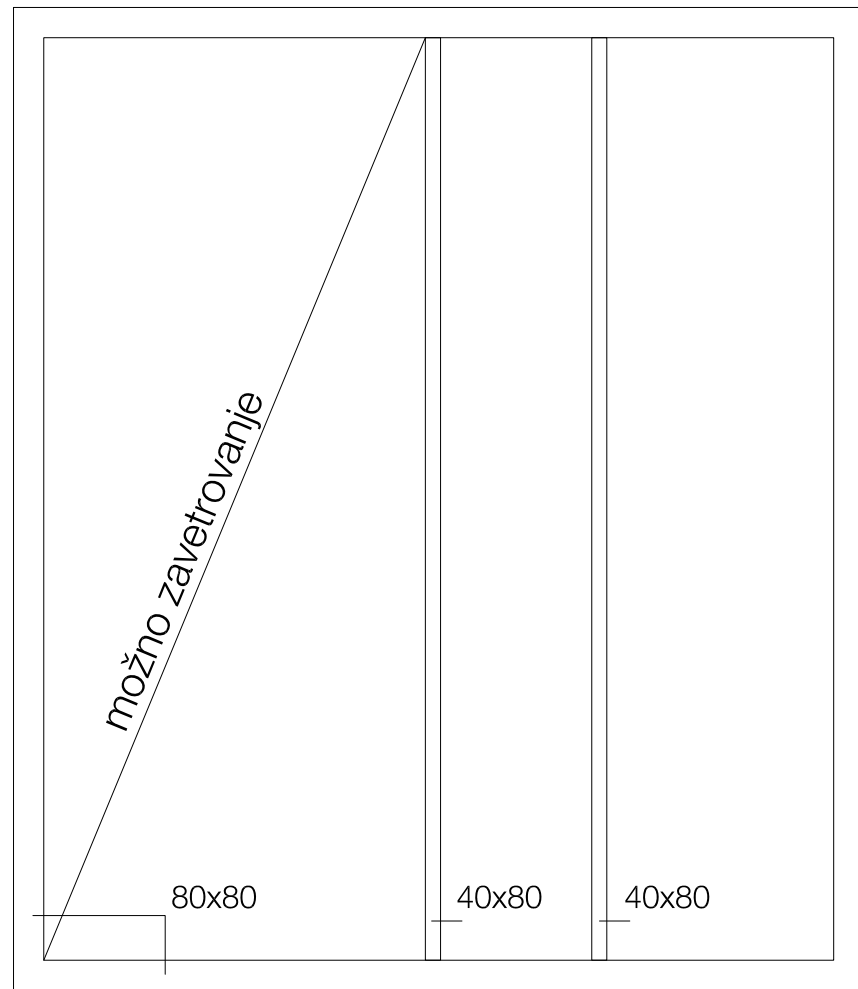
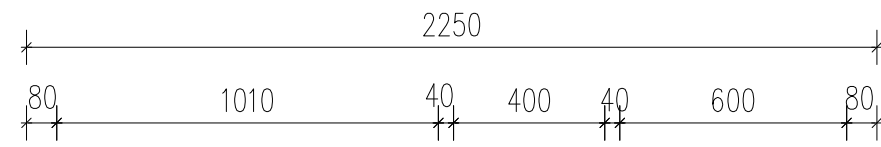
FASADA A - odprt kiosk



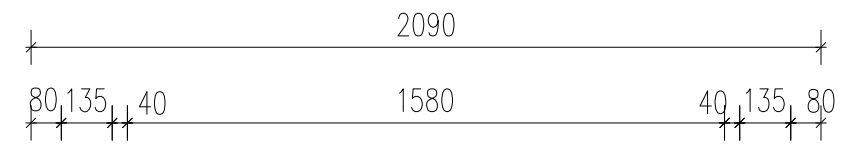
FASADA B - zaprt kiosk



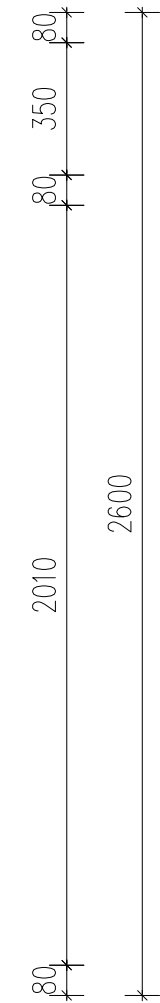
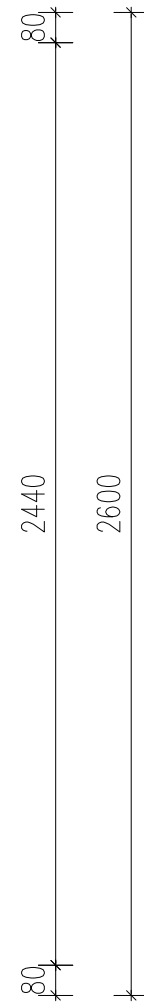
FASADA B - odprt kiosk

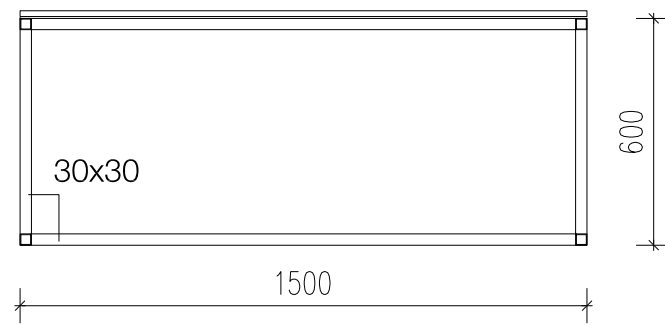
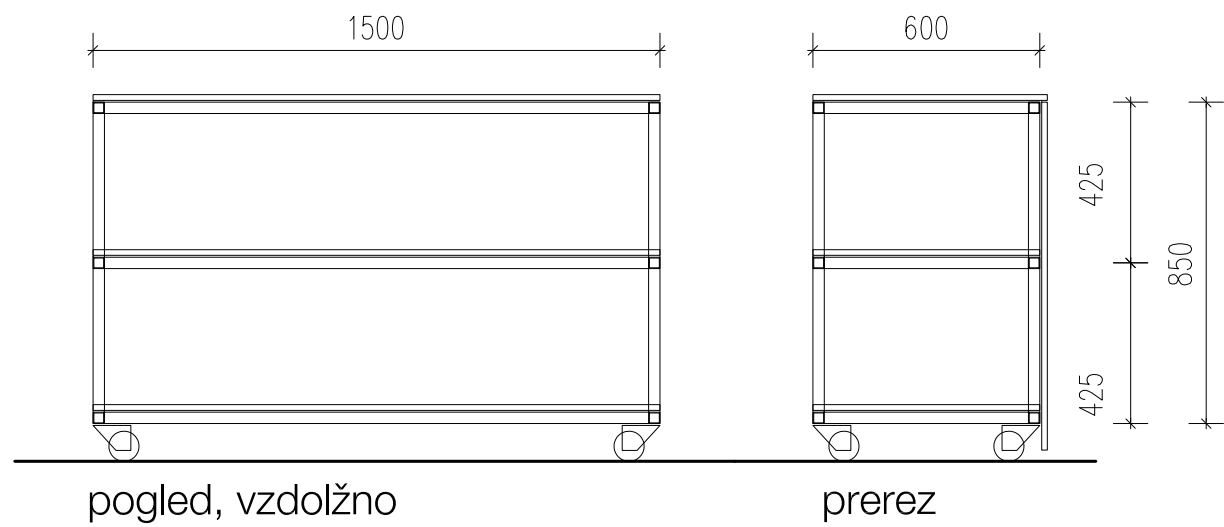


stranici B - pogled od znotraj

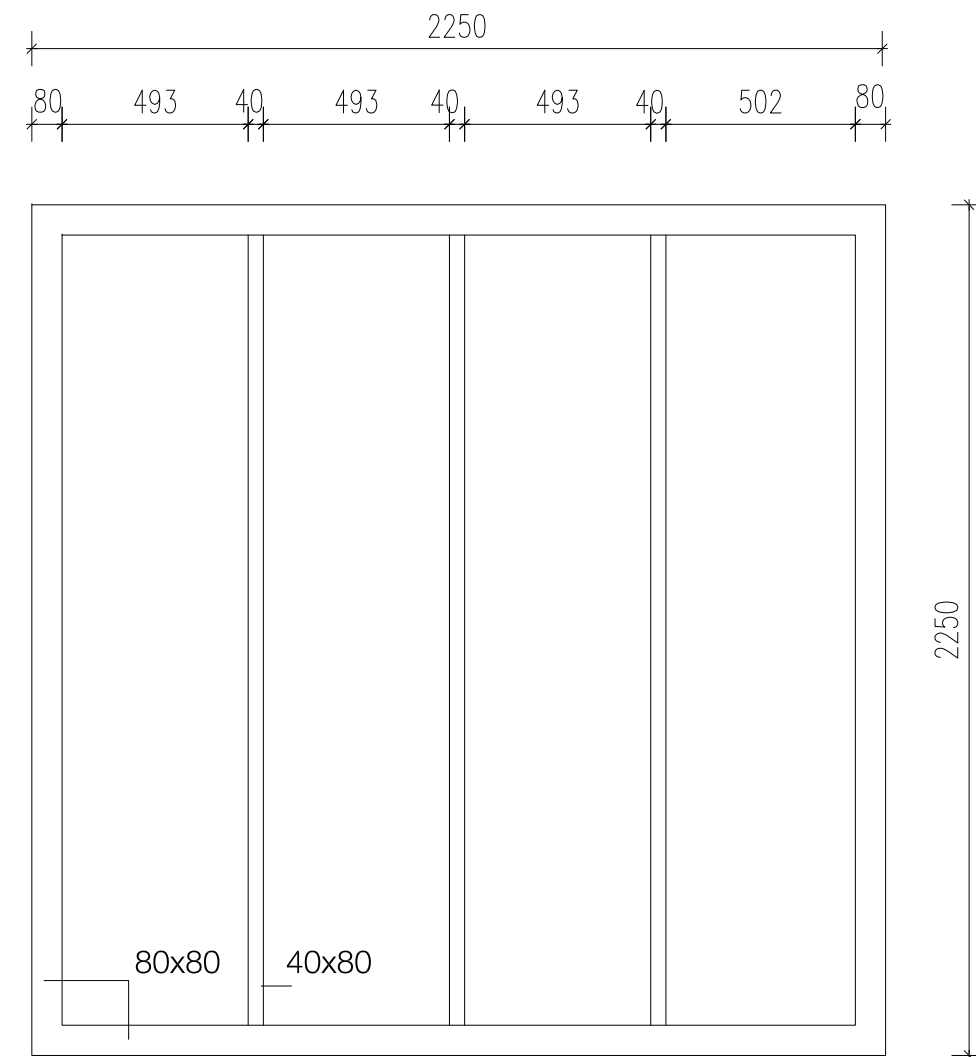


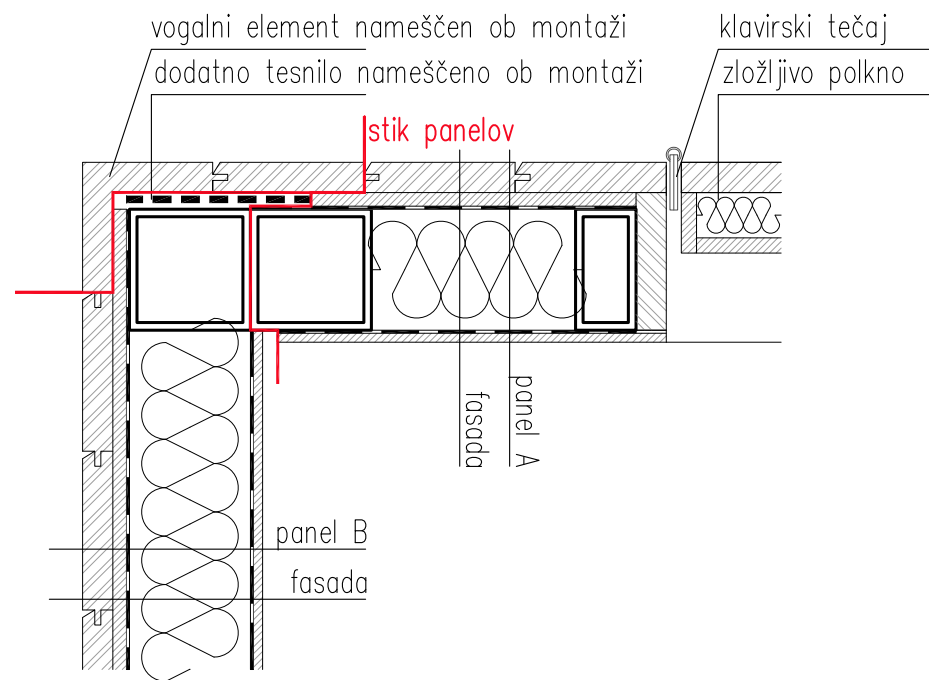
stranici A - pogled od znotraj



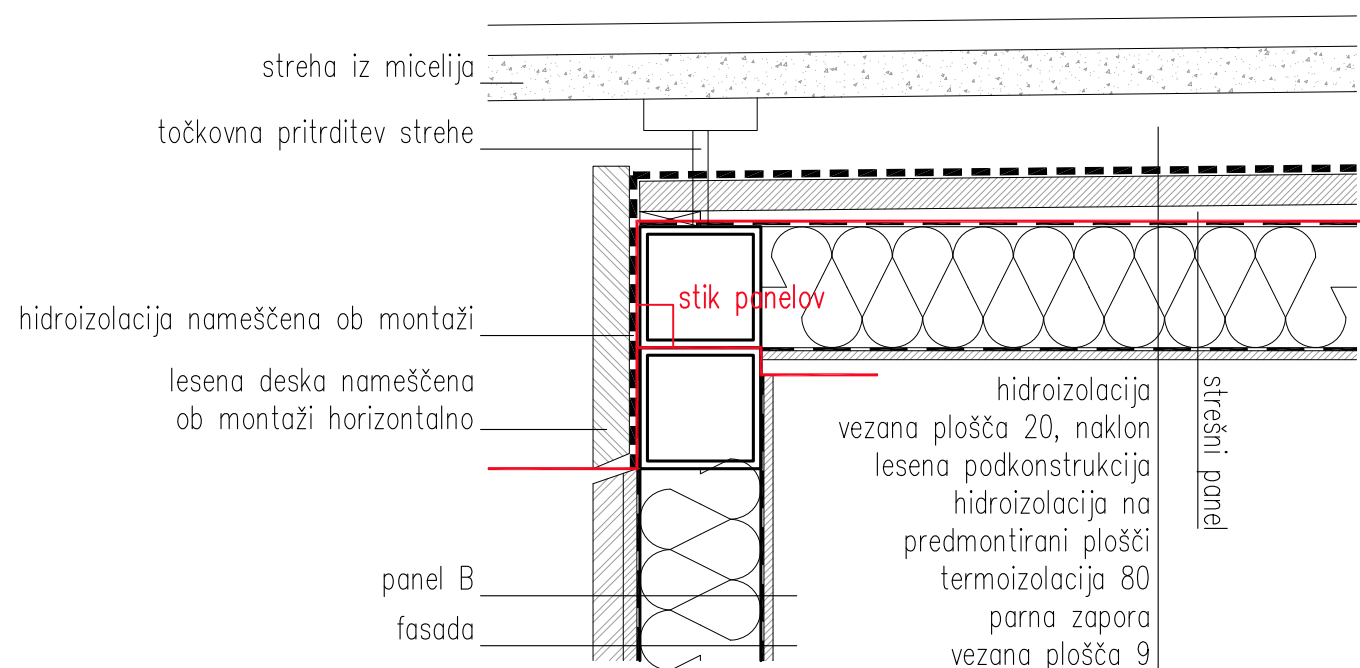


pult, voziček

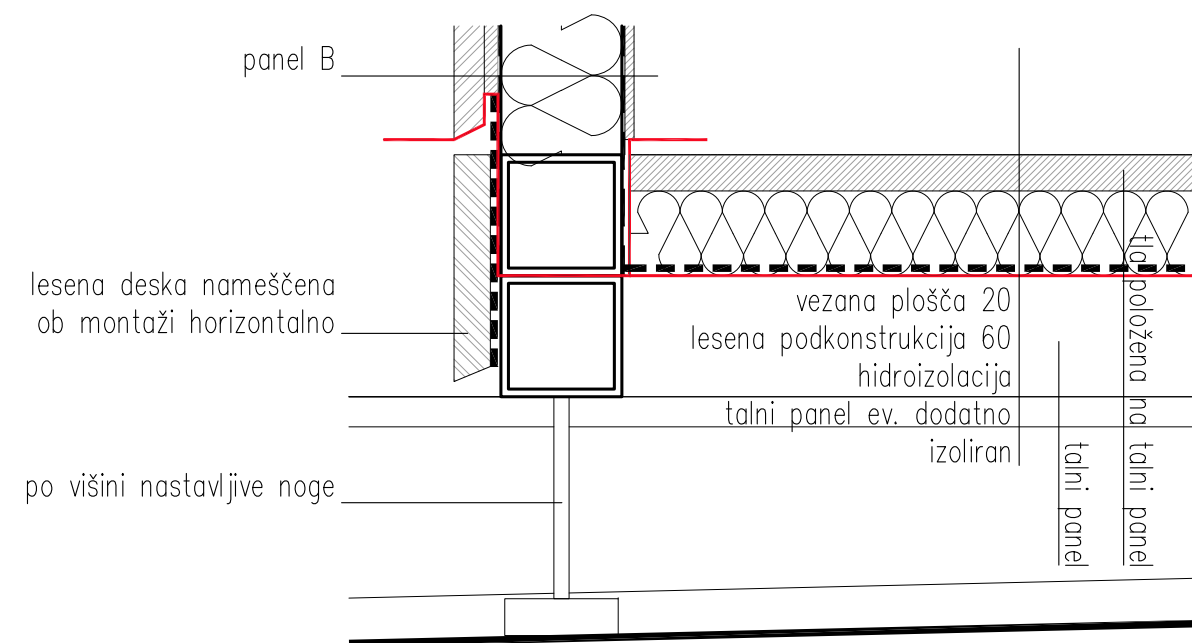




STIK DVEH STRANSKIH PANELOV - TLORIS



STIK STREHE IN FASADE PANELOV - PREREZ



STIK TAL IN FASADE PANELOV - PREREZ